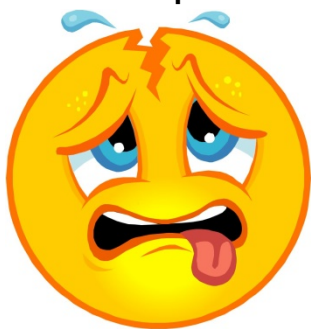


SAFETY BULLETIN

WHY BE CONCERNED ABOUT **CHEMICAL SAFETY**?

Short term impact of exposure



HEADACHE



SKIN DAMAGE

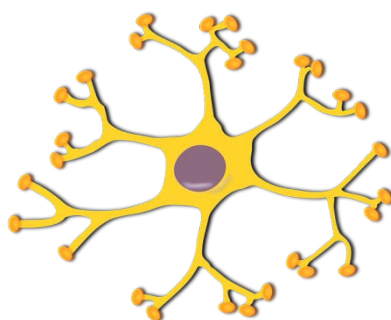


VOMITING

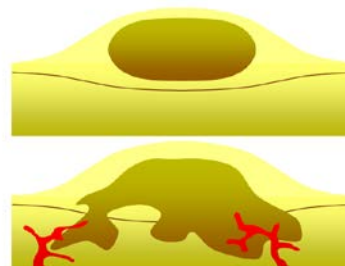
Long term impact of exposure



LUNG DISORDER



NERVE DAMAGE



CANCER

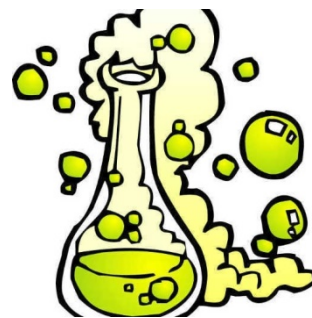
Physiochemical hazards – due to improper handling or use



FIRE



EXPLOSION

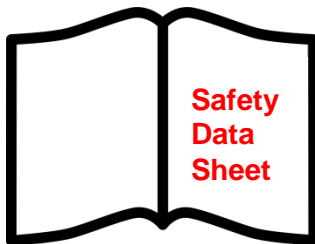


CHEMICAL REACTION

Often the effects of long term exposure take time to show as symptoms.

The best way to avoid either acute [immediate or short term] health impacts or chronic [long term] health impacts is to avoid exposure in any form.

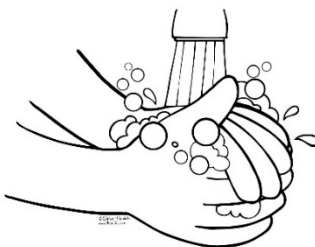
WHAT TO DO?



KNOW HOW TO USE, MIX AND STORE CHEMICALS
READ THE RELEVANT SDS, HAVE A COPY WITH YOU



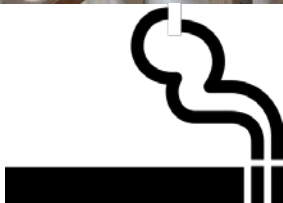
TAKE CARE WHEN HANDLING AND USING
WEAR REQUIRED PPE



WASH HANDS AND ANY EXPOSED AREAS
EVEN IF GLOVES ARE USED



STORE CHEMICALS SAFELY



KEEP CHEMICALS AWAY FROM FLAMES OR IGNITION
SOURCES



REPORT ANY ISSUES OR CONCERNS

QUESTIONS?

Q1. You have been given a container of chemical. The chemical has been leaking and damaged the label on the container. You cannot read the instructions on how to use the chemical or the safety information. What should you do?

- a) Write the name of the chemical on the label
- b) Go ahead and use the chemical so it won't go to waste
- c) Dump the chemical down the sink
- d) Tell your supervisor

Q2. Which of the following steps will help you to stay safe when using chemicals?

- a) Read the instructions first
- b) Wear the proper PPE
- c) Wash your hands thoroughly after using any chemical and before breaks
- d) All of the above

Q3. One of your team is using a strong dangerous chemical without the required PPE. This is long sleeve shirt, long pants, full face cover and gloves. What should you do?

- a) Ignore him, it's his problem
- b) Ask him to stop and either put on the required PPE or give the job to someone else who is protected
- c) Tell him to stop being an idiot
- d) Talk to the others on the team about his behaviour

Q4. A worker is kneeling down and measuring chemical for mixing with water and spraying. He loses his balance and spills the chemical over his hand and arm. What should he do?

- a) Wipe it off with a rag
- b) Run his hand and arm under the tap
- c) Remove his shirt, wash his arm and hand thoroughly, replace the shirt or wash out the chemical
- d) Just ignore it

Answers:

Q1 [d] tell your supervisor so the risk associated with the chemical can be assessed, and appropriate action taken. Labels show safety information and are important.

Q2 [d] all of the above are important steps in handling chemicals safely and protecting yourself from harm.

Q3 [b] A person breaching a safe work procedure is also breaching the law – the work health and safety act by not taking *reasonable care for his or her own health and safety*.

Q4. [c] any contact with a chemical should be considered to be potentially harmful as the chemical can enter the body through contact with the skin – it does not need to be ingested. A person who has accidentally come into contact with a chemical should thoroughly remove all traces of the chemical from being in contact with their body as soon as possible.